



LUCAS
Lifecare

Innovating For Better Health

The convenience of portability and superior imaging is now available. Announcing LifeRay from **Lucas Lifecare**. LifeRay portable X-ray comes with improved ergonomics, functions & safety. The features are: Variable kV options, longest warranty & lightweight.

LifeRay gives you "World Class Quality with Midwest Service"

Contact Us:



1-833-239-1001



Features

- Variable kV with 60, 65, and 70 options
- Lightweight at 5.0lb (excluding scatter shield)
- 0.4mm focal spot similar to comparable best-in-market models
- Built-in inclinometer detailing the angle of the unit
- Smart Li-ion battery charging, automatically turns off the charger when fully charged
- Up to 3 hours to full charge from zero
- Rapid charge in 10 minutes 0 to 20%
- Free standing on countertop



- No battery removal for charging
- 500 Shots per charge at 70kV & 100ms
- Multiple lanyard selections available for neck & wrist
- Static 2.5 mA matching kV
- Demo mode available for end-user education
- Optional travel case from Pelican
- Manufactured and tested in the U.S.
- Repaired and warranted in U.S.
- ISO 13485 Conformant Medical Device Quality Management System

Details & Features



Wide Compatibility

Images on film, digital RVG, or PSP receptors.



Versatile Functionality

Three tube head voltages (60 / 65 / 70 kVp)
Strong tube head current (2.5 mA)
A range of exposure durations (10 ms – 1 s)
Inclination guide (+70° to -70°)
providing optimum image quality.



Wireless Charging

Recharge the unit's battery by simply placing on the docking cradle.



Efficient Performance

An independent clinical evaluation in comparison with its other competitive devices, LifeRay performed 10% better.



High Resolution

High grade image quality with a 0.4 mm focal spot.



Light & Compact

5lb weight (excluding scatter shield) and 10.7" height for easy handling and maneuverability.



Smart Battery Management

Up to 500 exposures from a single full charge of the battery. Up to 100 exposures from just a 10 minute rapid charge.



Safe Operation

Radiation leakage well within the air kerma limit specified by the FDA.

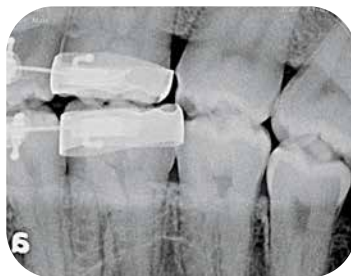


Warranty

Longest warranty at 3 years.

SPECIFICATIONS

Generator	100kHz Hi-frequency / closed loop control
Tube Voltage ($\pm 10\%$)	60kVp / 65kVp / 70kVp DC selectable
Tube Current ($\pm 15\%$)	2.5mA fixed
Focal Spot	0.4mm (0.016") as per IEC 60336:2020
Source - Skin Distance (SSD)	200 mm (7.9") minimum
X-ray Field Coverage	\varnothing 60 mm @ SSD 200 mm (\varnothing 2.4" @ SSD 7.9")
Exposure Time	0.01 - 1.0 second in 0.01 second increments
Duty Cycle	0.08
Angulation	-70° to +70° / 0° is horizontal
Total Filtration	1.95 mm (0.077") Al equivalent @ 70kVp minimum
UI Display	61 mm (2.4") / 320x240 px / 262 k color TFT LCD
UI Controls	Membrane Keypad & Trigger
Proportions	325 mm (12.8") L x 128 mm (5.0") W x 271 mm (10.7") H
Weight	2268 g (5.0 lb excluding scatter shield)
Electrical Safety	2.5 kV rms Isolation / Class II insulation sans electrical grounding
Electromagnetic Safety	200 μ W/cm ² maximum RF emission
Radiation Safety	0.88 mGy/h maximum X-ray leakage
Thermal Safety	Under 70°C (158°F) oil-cooled, thermistor controlled
Ingress Protection	IPX0 / do not operate in wet conditions
Operating Environment	10°C - 40°C (50°F - 104°F) temperature 20% - 80% relative humidity non-condensing 0.5 bar - 1.0 bar (7 psi - 15 psi) pressure
Compatible Receptors	Analog Film Digital Radio VisioGraphy (RVG) Photostimulable Phosphors Plate (PSP)
Power Adapter SMPS Input	90-250 V AC / 50 or 60 Hz / 1 A
Battery	21.6 V / 3200 mAh rechargeable Lion
Exposures per charge	500 at 70kV and 100ms



U.S. FOOD & DRUG
ADMINISTRATION



LUCAS

Lifecare

LUCAS LIFE CARE

2302 Beloit Avenue, Janesville, WI 53546



1-833-239-1001



info@lucaslifecare.com



www.lucaslifecare.com



Scan Here